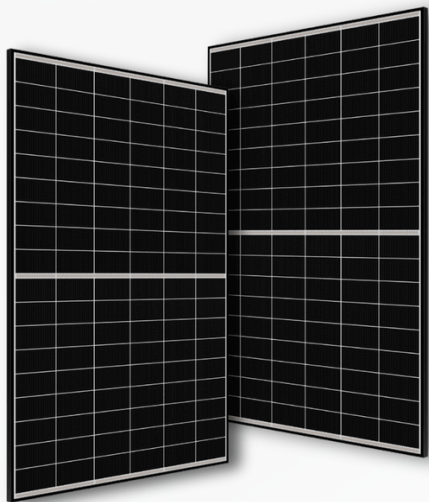


# Canadian Solar

## QUOTED SOLAR CAPACITY (KW)

<b>Brand</b>	Canadian Solar
<b>Module</b>	TOPHiKu6 Module
<b>Cell Technology</b>	N-type TOPCon
<b>Power Rating</b>	465W
<b>Efficiency Rating</b>	23.3%
<b>Dimensions</b>	1762 x 1134 x 30 mm
<b>Warranty</b>	25-year product warranty 30-year linear power performance warranty



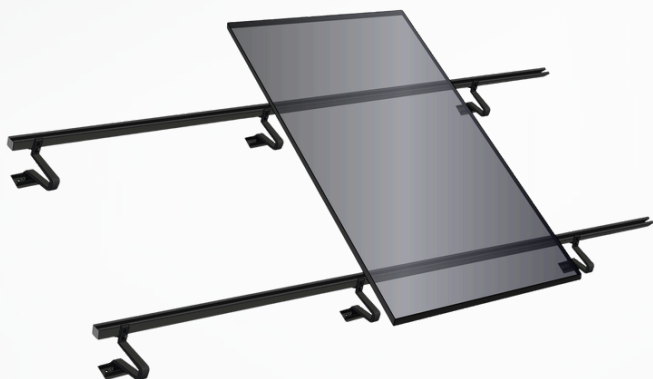
Powerful and efficient - perfect for compact spaces or high energy demands.



Proven to perform, with high yield and low degradation.



Exceptional value without compromising on quality.



## SOLAR MOUNTING

### Premium All-Black Hardware

Your system includes all-black hardware and railing for a streamlined, modern look. Premium balance-of-system componentry will protect your roof's integrity and an all-black system maximises aesthetic value.

## Canadian Solar 465W TOPHiKu6 Module

[Datasheet](#)[Learn More](#)